

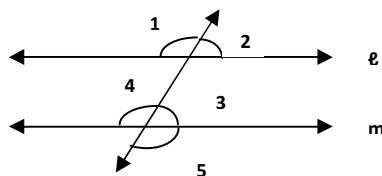
**D.A.V. Public School, Kurukshetra**

**Class : VI**

**Winter Assignment 2018-19 (Maths)**

**Q1. Tick the correct option**

- (i) Fourth power of -2 is  
(a) -16                      (b) -8                      (c) +8                      (d) +16
- (ii) The algebraic expression for the statement: 'Product of x and b subtracted from the product of y and c'  
(a)  $xy-bc$                       (b)  $bx-cy$                       (c)  $cy-bx$                       (d)  $xc-by$
- (iii) The linear equation for 3 less than the sum of a and 8 is 6 will be  
(a)  $3-a+8=6$                       (b)  $3-(a+8)=6$   
(c)  $(a+8)-3=6$                       (d)  $(a+8)+3=6$
- (iv) A set of points which extend infinitely in all directions is called  
(a) line                      (b) line segment                      (c) Plane                      (d) Ray
- (v) The interior and boundary of a triangle is called  
(a) exterior                      (b) interior                      (c) triangular region                      (d) Plane
- (vi) The pair of corresponding angles is



- (a)  $\angle 2, \angle 5$                       (b)  $\angle 1, \angle 3$                       (c)  $\angle 1, \angle 4$                       (d)  $\angle 3, \angle 4$
- (vii) If the radius of the circle is increased by 3 times then the diameter increases by \_\_\_\_\_ times.  
(a) 3                      (b) 4                      (c) 6                      (d) 8
- (viii) A chord which passes through the centre is called

(a) radius            (b) diameter            (c) arc            (d) none

(ix) The angle that cannot be constructed using ruler and compasses is

(a)  $30^\circ$             (b)  $22.5^\circ$             (c)  $75^\circ$             (d)  $70^\circ$

(x) The total length of the boundary of a closed figure is called

(a) Area            (b) Perimeter            (c) Volume            (d) Region

**2. Fill ups:**

(i)  $(-1)^{11} =$  \_\_\_\_\_

(ii) The number 5% less than 800 is \_\_\_\_\_

(iii) Sum of  $-8x, 9x, -2x$  and  $x$  is \_\_\_\_\_

(iv) The value of  $x$  in the equation  $-8x=72$  is \_\_\_\_\_

(v) When two lines intersect each other at a point then that lines are called \_\_\_\_\_ lines.

(vi) The interior opposite angles of the exterior angle at Vertex C of a triangle ABC are \_\_\_\_\_ and \_\_\_\_\_.

(vii) The radius of the circle whose diameter is 9 cm is \_\_\_\_\_.

(viii) A perpendicular bisector divides the line segment into \_\_\_\_\_ equal parts.

(ix) The distance covered by a farmer around a field of 120 m length and 80m width is \_\_\_\_\_m.

(x) Area of a square is 144 sqm. Its side will be \_\_\_\_\_m.

3. Solve the equation  $1 - 3x = -14$ .

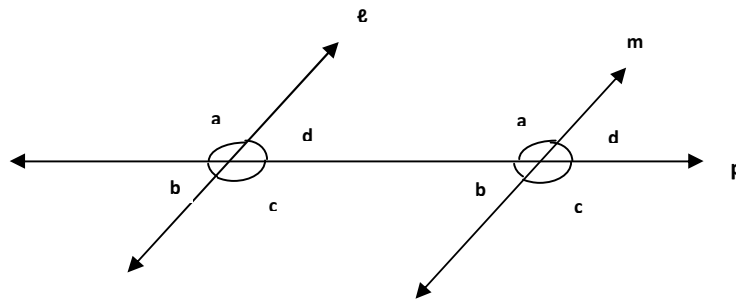
4. Subtract  $4a^2b - 3ab + ab^2$  from  $3a^2b + 8ab - ab^2$ .

5. Simplify :  $6 - [2 - \{3 + (4 - 8)\}]$

6. If  $p = -2, q = -1, r = 3$

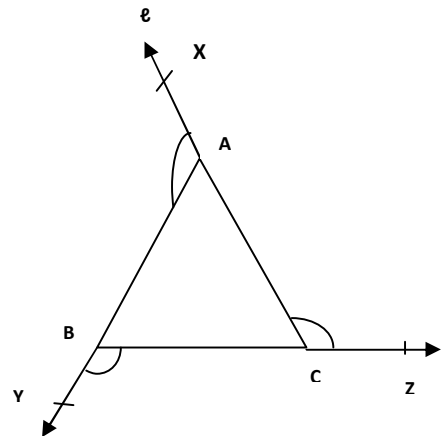
Find the value of  $2p - 3q + 4r$

7. Find the sum :  
 $x^2+2 yz-3 z^2, 4 y^2+3 yz - 5 x^2$  and  $3 x^2- 9 y^2+ 4 yz$ .
8. Solve the equation and check the answer  $\frac{3}{4}x +8 = 17$ .
9. Lines  $\ell$  and  $m$  are intersected by a transversal  $p$ . Identify the following :



- (a) Corresponding angle of  $\angle e$   
 (b) Alternate angle of  $\angle c$   
 (c) Vertically opposite angle of  $\angle f$

10. In figure, Name
- (a) Side opposite to the vertex A  
 (b) Interior adjacent angle of  $\angle c$  by  
 (c) Interior opposite angles of the exterior  $\angle XAB$ .



### Activities

11. Cut and Paste a rectangular and a square sheet of paper. Use a coloured tape all around them. How much tape will be required? Also find the area of both the pieces.

12. Draw a circle on a paper using a bangle and cut it out. Fold the circle into half. What is the name of the part of the half of the circle. Now fold it again into half. Name the half part of the half circle. Now open the folded circle, You will get two creased lines crossing each other. Now trace a pencil on these lines is the centre. Name it 'O'. Name any one radius and diameter of the circle.

**D.A.V. Public School, Kurukshetra**

**Class : VI**

**Winter Assignment (Social Science)**

**Answer the following questions:**

1. Write the difference among Tehsildar, Kanungo and Patwari.

Ans. \_\_\_\_\_  
\_\_\_\_\_  
\_\_\_\_\_  
\_\_\_\_\_  
\_\_\_\_\_

2. Why toll tax is collected in India?

Ans. \_\_\_\_\_  
\_\_\_\_\_  
\_\_\_\_\_

3. Write the importance of justice and impartiality while deciding a dispute.

Ans. \_\_\_\_\_  
\_\_\_\_\_  
\_\_\_\_\_  
\_\_\_\_\_

4. List down the problems that people face in the villages as well as in cities. Also write down the possible solutions for it.

Ans. \_\_\_\_\_  
\_\_\_\_\_  
\_\_\_\_\_

---

5. List down the teachings which are common in most of the religions and also explain with example the true picture of Indian Secularisum.

Ans. \_\_\_\_\_

\_\_\_\_\_

\_\_\_\_\_

\_\_\_\_\_

\_\_\_\_\_

\_\_\_\_\_

6. Who was Gautam Buddha and what was his contribution?

Ans. \_\_\_\_\_

\_\_\_\_\_

\_\_\_\_\_

\_\_\_\_\_

\_\_\_\_\_

7. On the basis of India's contact with outside world, write five features of Indian culture?

Ans. \_\_\_\_\_

\_\_\_\_\_

\_\_\_\_\_

\_\_\_\_\_

\_\_\_\_\_

8. Suggest ways and means to keep your school campus clear and tidy.

Ans. \_\_\_\_\_

\_\_\_\_\_

---

---

---

9. Who were called Nayannars and Alvars?

Ans. \_\_\_\_\_

---

---

10. Suggest any three activities which the government should take up to help the poor and the needy to make them self dependent, without any consideration of caste or religion.

Ans. \_\_\_\_\_

---

---

---

---

11. Who s Ambassador?

Ans. \_\_\_\_\_

12. Why the Gupta period is known as the “Golden age of Ancient India”.  
Explain with example.

Ans. \_\_\_\_\_

---

---

---

---

13. What is the difference between Astrology and Astronomy?

Ans. \_\_\_\_\_  
\_\_\_\_\_  
\_\_\_\_\_  
\_\_\_\_\_

14. Differentiate between Mahayana and Hinyana.

Ans. \_\_\_\_\_  
\_\_\_\_\_  
\_\_\_\_\_

15. In which year "Project Tiger" started and why?

Ans. \_\_\_\_\_  
\_\_\_\_\_  
\_\_\_\_\_

16. Why we need to conserve forests?

Ans. \_\_\_\_\_  
\_\_\_\_\_  
\_\_\_\_\_  
\_\_\_\_\_

17. Why India is called a land of tropical monsoon climate?

Ans. \_\_\_\_\_  
\_\_\_\_\_  
\_\_\_\_\_  
\_\_\_\_\_



---

18. Why do the Northern plains of India have a high population?

Ans. \_\_\_\_\_

---

---

---

19. What is the importance of plateau of India?

Ans. \_\_\_\_\_

---

---

---

20. What do you mean by Tributaries? Give example also.

Ans. \_\_\_\_\_

---

---

---

---

शीतावकाश गृह कार्य  
विषय – हिन्दी

- प्र. १. 'पेड़ बचाओ' और 'रक्तदान' विषय पर विज्ञापन बनाइए ।
- प्र. २. पशु – पक्षियों के कल्याण के लिए सरकार ने कई नियम बनाए हैं । उनके बारे में जानकारी एकत्रित करके उत्तर पुस्तिका में लिखिए ।
- प्र. ३. 'खेलों का महत्त्व' बताते हुए अपने प्रिय खेल का वर्णन कीजिए ।
- प्र. ४. छठी कक्षा के विद्यार्थियों को विद्यालय की ओर से दो दिन के लिए शिमला में हिमपात दर्शन के लिए लेकर जाया जा रहा है । इस संबंध में एक सूचना लिखिए ।
- प्र. ५. कोई भी शारीरिक, मानसिक व बौद्धिक विकार होने पर भी जीवन में सफल रहे किसी ऐसे व्यक्ति की कामयाबी की कहानी उत्तर पुस्तिका में लिखिए ।
- प्र. ६. कोई एक प्रेरणादायक 'स्वरचित' कविता लिखिए ।

नोट : शीतावकाश गृहकार्य नई उत्तर पुस्तिका में लिखिए ।

**D.A.V. PUBLIC SCHOOL, KURUKSHETRA**  
**WINTER ASSIGNMENT**  
**CLASS : VI**  
**SUBJECT : SCIENCE**

Q.1 Which of the following is made from coconut fibers?

- (a) Sweater      (b) Shoes      (c) Mattresses      (d) Sarees

Q.2 Angora goats are found in \_\_\_\_\_

- (a) Haryana      (b) Punjab      (c) Rajasthan      (d) Jammu & Kashmir

Q.3 Rearing of Silkworm for getting silk is called \_\_\_\_\_

- (a) Apiculture      (b) Sericulture      (c) Breeding      (d) None

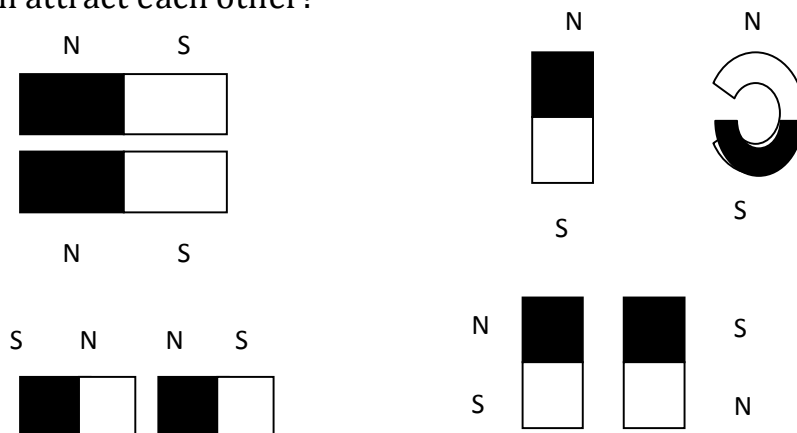
Q.4 After repeated rubbing with a magnet in the same direction, a piece of substance fails to get magnetised. To which group does it belong?

- (a) Magnets      (b) Magnetic Substances  
(c) Non magnetic substances      (d) None of these

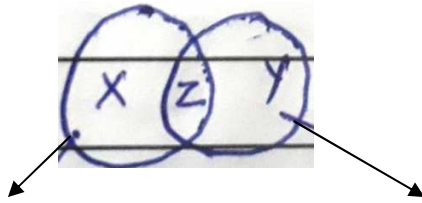
Q.5 Soft iron pieces are placed across the ends of bar magnets when stored. What are such pieces called?

- (a) Preservatives      (b) Keepers      (c) Compasses      (d) Holes

Q.6 Two magnets are placed close to each other as shown below. Which set will attract each other?



Q.7 Which animal can be placed in group Z?



Animal that live on land

Animals that live in water

- (a) Bird                      (b) Frog                      (c) Shark                      (d) Dog

Q.8 An organism X has hair on its body. It gives birth to young one that feed on their mother's milk. Which organism is X?

- (a) Rabbit                      (b) Tortoise                      (c) Lizard                      (d) Crocodile

Q.9 Which option does not belong to the group formed by others?

- (a) Snail                      (b) Fish                      (c) Cup                      (d) Grass

Q.10 Which of these articles can not be recycled and used again?

- (a) Newspaper                      (b) Banana peel                      (c) Rain coat                      (d) Plastic bags

Q.11 Which of the following is an example of a solid-in-gas mixture?

- (a) Soil                      (b) Smoke                      (c) Moisture                      (d) Dew

Q.12 Which of the following is not a pure substances?

- (a) Argon                      (b) Helium                      (c) Water                      (d) Air

Q.13 What is rain water Harvesting?

- (a) storing ground water present in wells.  
(b) stopping the cultivation of crops to save water.  
(c) The seeping of water into the ground.  
(d) collecting rain water.

Q.14 Shreya placed two drops of liquid on cooked rice. The rice turned to blue black in colour. What could be the liquid?

- (a) Benedict's solution                      (b) Iodine solution  
(c) Nitric acid                                  (d) Copper sulphate solution

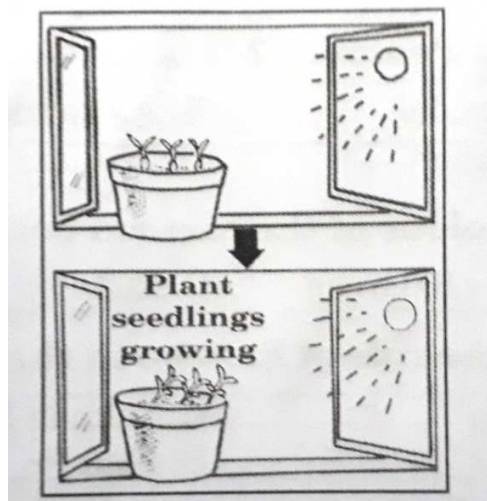
Q.15 The figure given below show the formation of yarn.

Cotton fibers subjected to  to draw yarn or threads

Which of the following completes the given figure?

- (a) Ginning                      (b) Weaving                      (c) Knitting                      (d) Spinning.

Q.16 Observe the figure given below.



The seedlings are responding to which of the following stimulus?

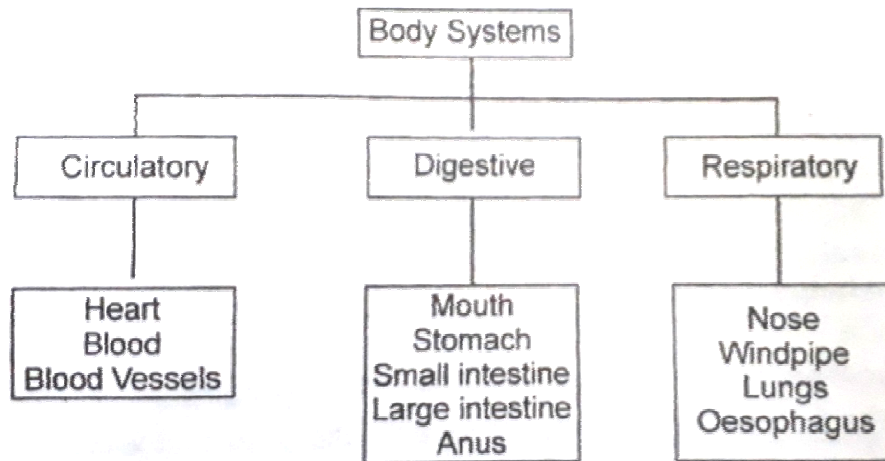
- (a) Touch                      (b) Sunlight                      (c) Water                      (d) Gravity

Q.17 Which type of soil is good for growing cotton plants?

- (a) Alluvial soil                      (b) Red soil                      (c) Loamy soil                      (d) Black soil

Q.18 The chart below shows the classification of organs that make up the various body systems of the human body.

Which organ is classified wrongly?



- a) Heart
- c) Stomach

- b) Oesophagus
- d) Windpipe

Q.19 The form of energy, possessed by flowing water, is known as-

- (a) Potential energy
- (b) Kinetic energy
- (c) Chemical energy
- (d) Light energy

Q.20 Which among these is not a flowering plant?

- (a) Grasses
- (b) Algae
- (c) Rose
- (d) Mango